

HotPoint 1500S 5 GHz Indoor Wireless Mesh Router

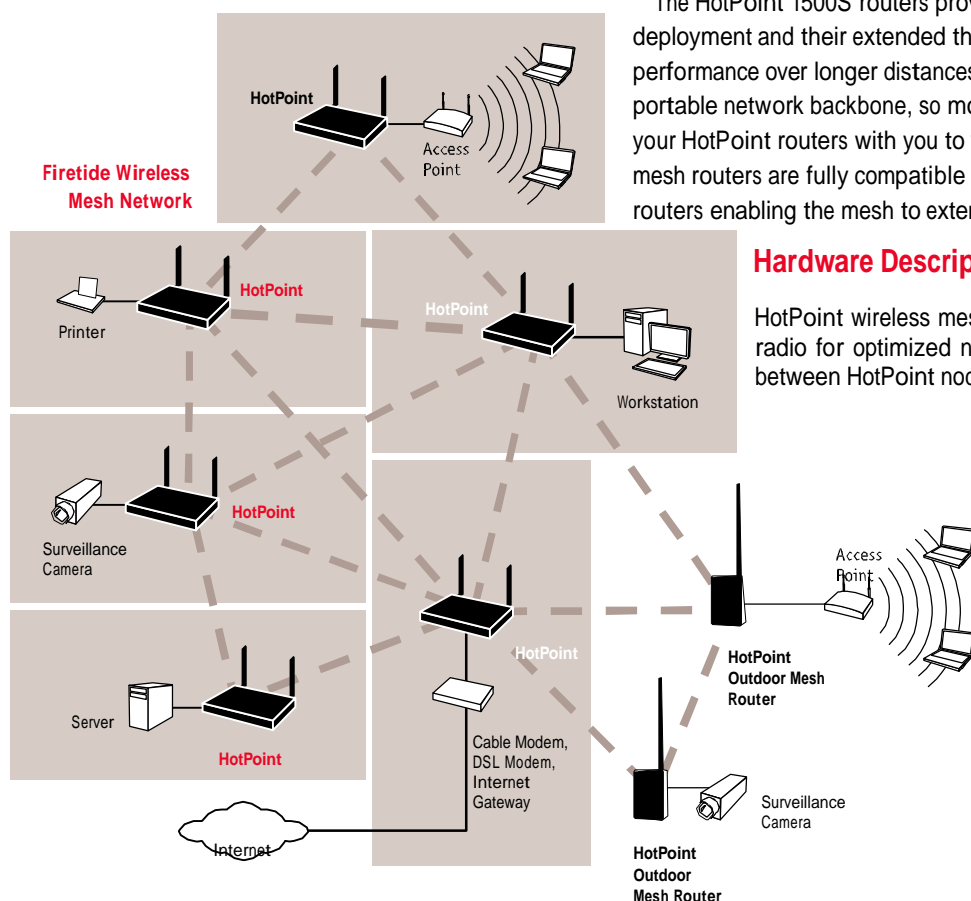


HotPoint 1500S wireless mesh routers eliminate backhaul wiring for computers, access points, Ethernet switches, and other network devices.

Firetide™ HotPoint™ 1500S wireless mesh routers enable instant deployment of wireless networks and provide a simple and reliable alternative to standard LAN cabling. Deploy Ethernet ports anywhere—instantly! HotPoint routers eliminate costly backhaul wiring for wireless access points and hotspots. In addition, they also enable wireless connectivity for standard networking devices such as computers, printers, access points, surveillance cameras, and Ethernet switches.

HotPoint 1500S wireless mesh routers provide a robust, flexible, and scalable LAN backbone solution. Because they form automatically without wires, Firetide mesh networks do not require elaborate site surveys or physical modifications to buildings and workspaces. Network installation costs will drop dramatically because time-consuming wiring between offices, walls, floors and different buildings is no longer needed. Provisioning is also easy and fast because special drivers, setup, and interfaces are not required for the equipment you connect to a Firetide instant mesh network. A simple to use management client is available to configure the mesh for each network deployment.

The HotPoint 1500S routers provide fast and easy indoor network deployment and their extended throughput ensures higher link performance over longer distances. A Firetide mesh also provides a portable network backbone, so moving your network is as easy as taking your HotPoint routers with you to your new site. HotPoint 1500S indoor mesh routers are fully compatible with HotPoint 1500R outdoor mesh routers enabling the mesh to extend to outdoor applications.

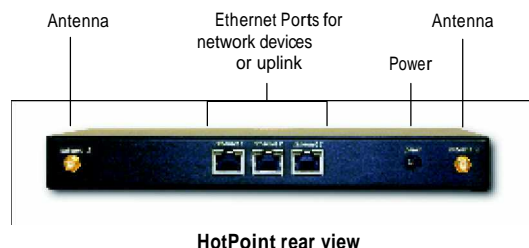


Hardware Description

HotPoint wireless mesh routers employ a high performance radio for optimized network coverage. Greater throughput between HotPoint nodes enables you to extend your network applications with services that previously required greater bandwidth over expensive cabling.

Built into a HotPoint are three standard 10/100 Ethernet ports for connecting standard networked client devices. You can also use one of these ports to link the Firetide mesh network with an existing wired LAN or to the Internet through a DSL modem or gateway device. The mesh node can operate freestanding or mounted to a wall. An external transformer supplies power from a standard 120 volt AC outlet.

HotPoint™ 1500S 5 GHz Indoor Wireless Mesh Router



HotPoint rear view

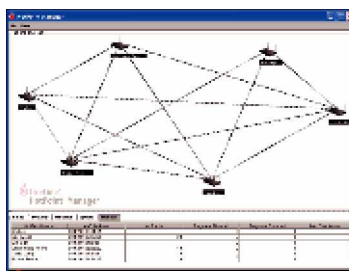
Robust Mesh Networking Technology

Firetide's mesh network technology supports multi-hop, point-to-point and multi-cast routing. HotPoint routers use a patented Firetide mesh routing protocol to manage the unique and dynamic environment of the mesh network.

This technology allows the HotPoint mesh nodes to find each other and form a mesh network automatically. Installing HotPoint mesh routers to the network is as simple as plugging them into an AC power source. If a HotPoint node is moved to a different location or is removed completely, the network will automatically heal itself and reroute traffic accordingly.

Easy Network Management

Managing the Firetide Mesh is easy with the included HotPoint Manager software. HotPoint Manager runs on a PC or workstation connected to the mesh and provides real-time views of all your outdoor and indoor mesh connections. It also enables customization of your mesh settings and individual HotPoint nodes.



HotPoint Manager software enables easy network management

With HotPoint Manager, you can change the default mesh network ID, IP address, and channel number settings as well as settings for security and power transmission. The software will help you maintain the health of your network and optimize HotPoint node placement and performance.

Powerful Security

Firetide HotPoint mesh networks can be configured for private or public operation with AES encryption in both modes. User data can thus be encrypted end-to-end across the mesh network. WEP encryption may also be enabled to provide an additional layer of security. The network also allows VPNs and any third-party encryption to be transparently through the mesh.

Ordering / Support

Call or visit our web site for more information.

www.worldwidewalkietalkie.com

Toll Free: 888-866-4711

Telephone: 281-931-9418

Fax: 888-866-4711

sales@worldwidewalkietalkie.com

P.O. Box 671745

Houston, TX 77267-1745

Specifications

Wireless Interface

- 5.15–5.25 GHz
- 5.25–5.35 GHz
- 5.725–5.825 GHz
- 128 bit WEP encryption
- Radio Tx power up to a maximum of 100 mW

Wired Interface

- Three Ethernet 10/100 (IEEE 802.3, 802.3u) ports
- Port-to-Port 128 bit AES encryption

Enclosure

- Two antenna connectors (SMA reverse polarity)
- One power connector
- Three Ethernet data connectors (RJ-45)
- Indicator LEDs (power, activity, fault)
- Wall mounting brackets
- Weight: 1.75 lbs (0.8 Kg)

Power

- 110/220 VAC, 50/60 Hz
- 12 W power consumption

Antenna

- 5" (12.9 cm) black, rubberized paddle
- Type: Omni, Vertical Polarization
- Range: 0.2 Miles (300 meters)
- Gain: 4.5 dB

Dimensions

- 9" x 5.9" x 1.1" (22.8 cm x 15 cm x 2.2 cm)

Environmental

- Operating temperature range: 0° C to 60° C
- Storage temperature range: -20° C to 80° C
- Operating Humidity (non-condensing): 10% to 90%
- Storage Humidity (non-condensing): 10% to 90%

Included Accessories

- Two omni-directional antennas
- 110/220 VAC, 50/60 Hz to 12 VDC universal power adapter

Optional Accessories

- Mounting bracket
- See your Firetide reseller for options and accessories

Warranty

One year, parts and labor

Product Ordering Code

1500S-0101